

模具日期章

Mold Date Indicator

◆本裝置之特性：

1. 外殼以白鐵鑄成軸心經碳化處理，研磨而成，將生鏽率降至最低點。
2. 安裝容易可隨成品變化。
3. 轉動能固定並有「答答」的感覺，時間和人工方面的節省符合經濟效益。
4. 提高模具及成品價值觀。

◆注意事項：

1. 裝卸時以較軟的物體如銅鋁墊之敲打。
2. 裝卸孔請勿過緊。
3. 非必要請勿拆開。
4. 排列時請注意字體方向以求成品美觀。
5. 加強模具美觀。

◆Specification:

1. Out case is maded by stainless steel and with caseharden also have grinding maching proof not in erosion.
2. Easy to establish and flexibility.
3. When you rotating it got "TAI-TAI" noise economic and time saving also labor saving.
4. Mold up grade and valuable.

◆Caution:

1. Set-up with soft material such as copper or aluminum.
2. Set-up mold not too tight allowance to be +0.03mm.
3. Do not disassembly.
4. Please to arrange number in same side.
5. Can enhance the beautiful outlook of mold.



TYPE 1:



TYPE 2:

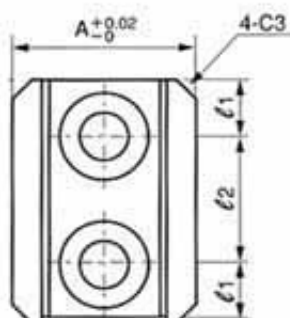
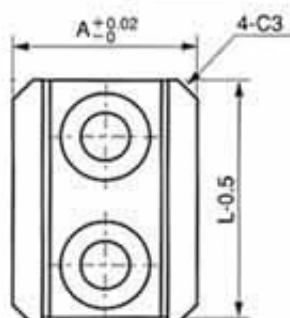
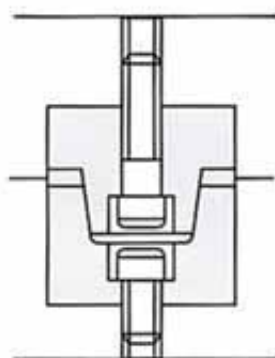


Item No.	TYPE 2	ϕ D	T
Y年		6	8
		8	10
		10	10
		12	12
		16	14
M月		6	8
		8	10
		10	10
		12	12
		16	14
B空白		6	8
		8	10
		10	10
		12	12
		16	14

Item No.	TYPE 2	ϕ D	T
D日(0-3)		6	8
		8	10
		10	10
		12	12
		16	14
D日(0-9)		6	8
		8	10
		10	10
		12	12
		16	14
D日(0-31)		16	14
		20	14

導位輔助器

Taper Block Sets

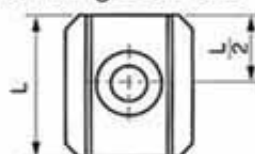


• Fixing Bolt Pitches

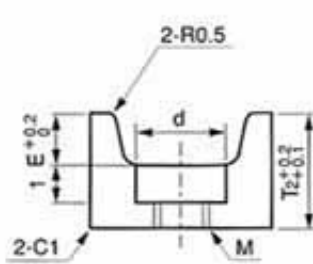
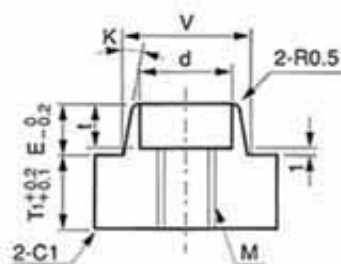
螺絲孔尺寸表

L	L ₁	L ₂
30	7.5	15
40	10	20
50	10	30

• One Fixing Bolt Hole



TBS20-25
TBS25-25



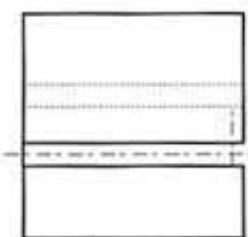
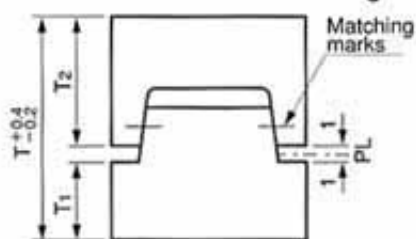
◆ Purchasing code:

Item No. × Q'ty

Example: TBS25×30L 5 Sets

A	L
20	25
	30
	40
25	25
	30
	40
35	40
	50
45	50

• Dimensions After Setting



材質Material: YK30

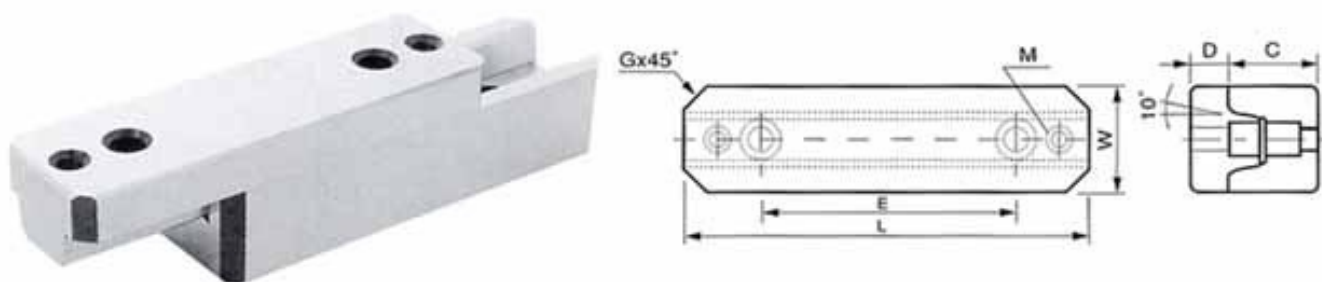
硬度 Hardness: HRC58° ~ 60°

單位Unit:mm

V	E	T1	T2	M	Bolt	t	d	Item No. Type	A	L	K
12	7	7	14	4	M3	3.5	6.5	TBS	20	25 30 40	5°
15	8	9	17	5	M4	5	8		25	25 30 40	
20	10	11	22	8	M6	7	11		35	40 50	
25	15	14	29	8	M6	7	11		45	50	

導柱輔助器

Taper Block Sets



材質Material: YK30 硬度 Hardness: HRC58° ~ 60° 單位Unit:mm

代號 Item No.	E	L	W	D	C	G	M
TBL 50	0	50	25	8	17.5	5	M5
TBL 100	60	100	30	10	22	4	M6
TBL 150	100	150	40	13	25	5	M8

材質Material: YK30 硬度 Hardness: HRC58° ~ 60° 單位Unit:inch

代號 Item No.	E	L	W	D	C	G	M
TBL 50	0	1.980	1.000	0.312	0.690	0.200	3/16"-24
TBL 100	2.50	3.980	1.250	0.375	0.870	0.200	1/4"-20
TBL 150	4.00	5.980	1.500	0.500	1.000	0.200	5/16"-18

◆ 採購代號 數量
例：TBL100 5組

◆ Purchasing code: Q'ty
Example: TBL100 5 sets

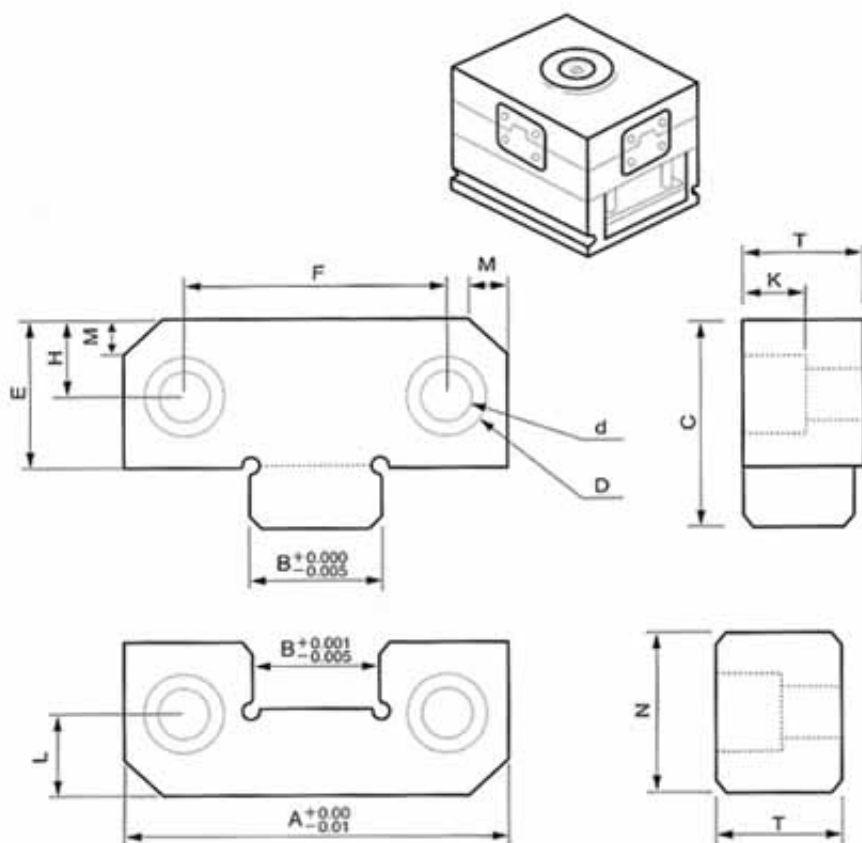
方型輔助器

Straight Block Sets

PLF



PLM



材質Material: YK30

硬度 Hardness: HRC58° ~ 60°

單位Unit:mm

製品代號 Item No.	A	B	C	D	d	E	F	H	L	M	T	K	N
PL50	50	17	30	10.5	6.5	21.5	34	11	11	5	16	8	21.5
PL75	75	25	50	16.5	10.5	36.0	50	18	18	5	19	12	36
PL100	100	35.4	65	16.5	10.5	45.0	70	22	22	5	19	12	45
PL125	125	45	65	16.5	10.5	45.0	84	22	22	5	25	12	45

材質Material: YK30

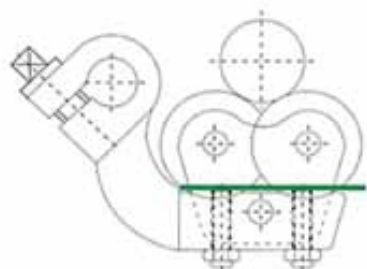
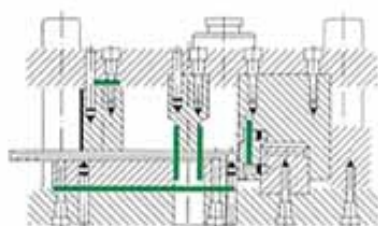
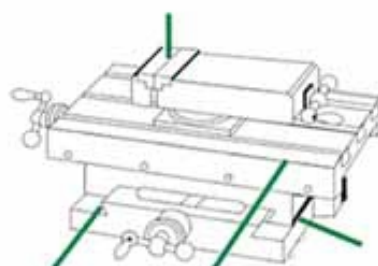
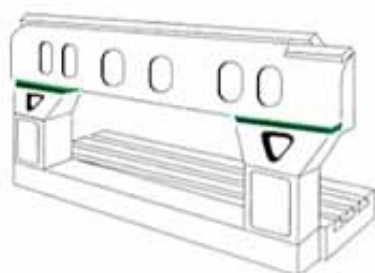
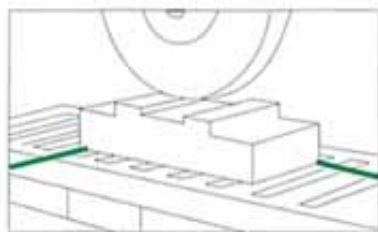
硬度 Hardness: HRC58° ~ 60°

單位Unit:inch

製品代號 Item No.	A	B	C	D	d	E	F	H	L	M	T	K	N
PL1.5	38.10	12.700	29.972	11	7	22.098	23.826	11.15	7.14	4.83	15.748	7	22.098
PL2.0	50.80	17.272	29.972	11	7	22.098	31.750	11.10	9.53	4.83	15.748	7	22.098
PL3.0	76.20	25.400	48.514	15	10	34.544	57.150	17.46	17.46	9.65	18.923	10	34.798
PL4.0	101.60	34.925	67.056	15	10	47.498	69.850	22.23	22.23	12.70	18.923	10	47.498
PL5.0	127.00	44.450	67.056	19	14	47.498	88.900	22.23	22.23	12.70	28.448	14	47.798

精密墊片

Thickness Gauge



厚度 Width Thickness mm	LENGTH/BOX 每盒長度											Q'TY/BOX 每盒片數				
	1m	2m	5m	5m	10m	5m	5m	5m	5m	5m	5m	10	10	5	5	5
	12.7	12.7	12.7	12.7	12.7	6	25	50	100	150	150	Format 25X 300 mm	Format 50X 300 mm	Format 100X 500 mm	Format 150X 500 mm	Format 150X 500 mm
0.005																
0.01																
0.02																
0.025																
0.03																
0.04																
0.05																
0.06																
0.07																
0.075																
0.08																
0.09																
0.10																
0.12																
0.15																
0.18																
0.20																
0.25																
0.30																
0.35																
0.40																
0.45																
0.50																
0.55																
0.60																
0.65																
0.70																
0.75																
0.80																
0.85																
0.90																
0.95																
1.00																
1.10																
1.20																
1.30																
1.40																
1.50																
1.60																
1.70																
1.80																
1.90																
2.00																

◆ "○" 註記者，無庫存

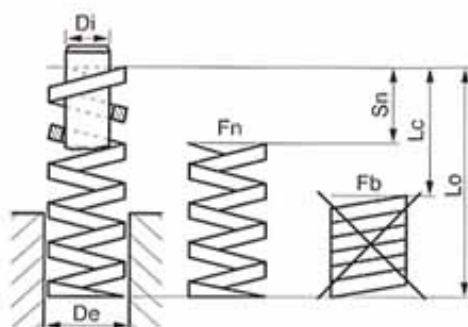
◆ Marked "○", Size not available



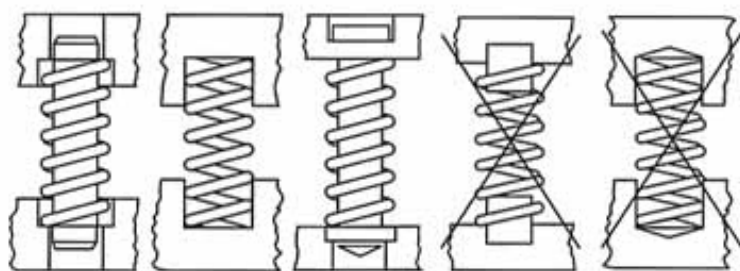
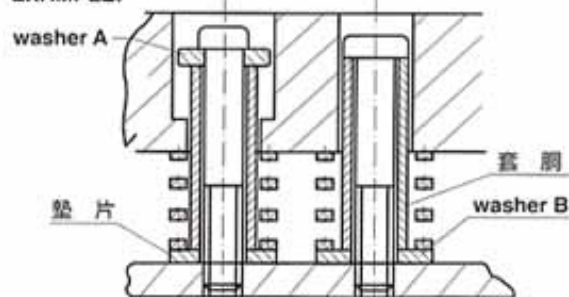
模具彈簧

Die Spring

- De 模孔徑
- Di 螺栓徑
- Lo 自由長
- Lc 最大壓縮變形量
- Fb 密著荷重
- Sn 最大使用壓深長度
- Fn 最大使用荷重



EXAMPLE:



模具彈簧之使用次數與壓縮比的關係

使用回數 種類 Working Times Description	100萬(自由長%) 1 million (% of free length)	50萬回(自由長%) 0.5 million (% of free length)	30萬回(自由長%) 0.3 million (% of free length)	最大壓縮量(自由長%) Max. Deflection (% of free length)	色別 Color
輕小荷重 (JF) Lightest Load	40.0%	45.0%	50.0%	Approx. 58.0%	黃色 Yellow
輕荷重 (JL) Light Load	32.0%	36.0%	40.0%	Approx. 48.0%	藍色 Blue
中荷重 (JM) Medium Load	25.6%	28.8%	32.0%	Approx. 38.0%	紅色 Red
重荷重 (JH) Heavy Load	19.2%	21.6%	24.0%	Approx. 28.0%	綠色 Green
極重荷重 (JB) Super Load	16.0%	18.0%	20.0%	Approx. 24.0%	咖啡色 Brown



JM



JF



JL



JH



JB



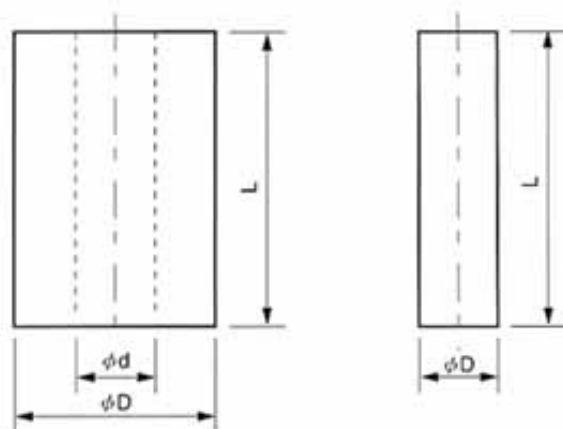
LR

※ The upper colors just only belong to Japanese spec., We are also distributing springs which are from TAIWAN, U.S.A and GERMANY.

※ 以上顏色僅為日本規格系列,本公司另有經銷台灣、美國及德國製造之彈簧。

優力膠條—管

Urethane Pu Tube-Rod



材質—美國進口高級原料 **Material:** Polyurethane, imported from U.S.A
 硬度—SHORE A90 $\pm 2^\circ$ (請用無屑切刀切斷)

Hardness: Hs A90 $\pm 2^\circ$, cut by burr-free knife.

特長—復元性強，伸縮比2/5，耐油無毒

Features: High recovery resistance, pressed ratio 2/5, oil-proof, Non-Toxic

用途—沖模、油壓機、聯軸器、馬達座墊等

Applications: Punch die, Hydraulic press, Shaft linkage, Motor support.

等級—綠A，紅A，乳白A及B級

Grade: Green A, Red A, Ivory A & Orange B.

優力膠條 PU Rod (Solid)

D	L	D	L
8	300	30	500
10		32	
12		35	
14		37	
16		40	
18	500	43	
20		45	
22		48	
25		50	
28		54	

優力膠管 PU Tube (Hollow)

D	d	L
15	6	300
16	6.5	
	8	
20	6	
	8	
	11	
22	12	
	6.5	
	8	
25/28	11	
	12	
	14	
	6.5	
30/32	8	500
	10	
	11	
	12	
	13	
35	14	
	8	
	10	
	11	
	12	
	13	
	14	
40	15	
	16	
	18	
	12	
	13	
	14	
	15	
	16	
45	18	
	20	
	22	
	25	
	30	
	30	

◆ 採購代號 製品代號 $D \times d \times L$ 數量
 例：優力膠管 25 \times 12 \times 300L 10條
 訂製時請說明等級

◆ **Purchasing Code:** $D \times d \times L$ Q'ty
Example: PU Tube 25 \times 12 \times 300L 10pcs
 Please specify grade when ordering.